



ENLACE 2019

Summer Research Experience

UC San Diego

Designing new technologies, discovering the future, establishing life-long friendships

The ENLACE summer research program at UC San Diego aims to encourage the participation of students and researchers in the sciences and engineering, while promoting cross-border friendships.

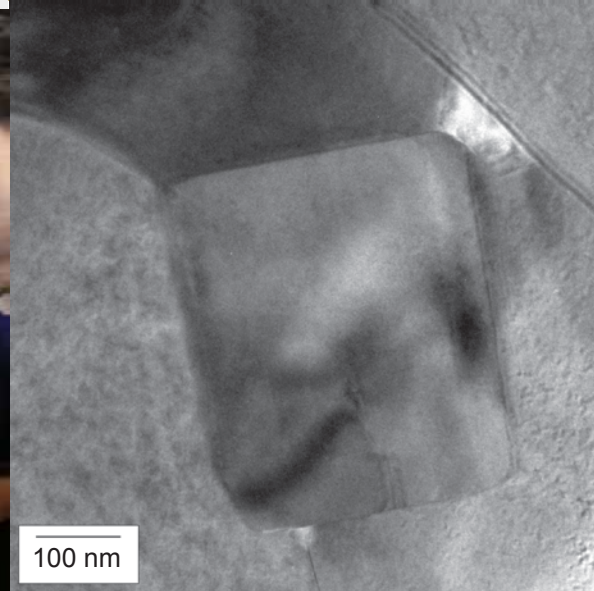
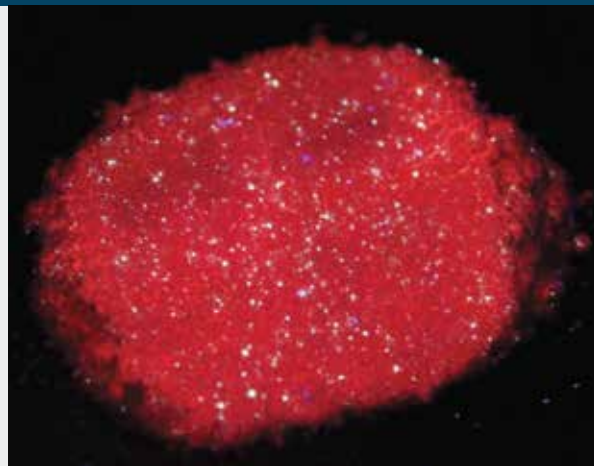
The program is an opportunity to explore a variety of interests through work on varied projects, while challenging the person to always consider science in the context of societal needs.

ENGINEERING SCIENCES **BIOLOGICAL SCIENCES** **PHYSICAL SCIENCES** **HEALTH SCIENCES**

Cost of program: \$5,000 . . . Generous scholarships available to students with financial need. Requests for scholarships are made when applying to program.

Ever since first grade, the other girls wanted to be a ballerina or a power ranger, and I wanted to be an anthropologist and people would say 'what's wrong with you?' And that kept evolving, and now I want to be an engineer. I love it." -

2013 participant



Director

Olivia A. Graeve, Ph.D.

Professor, UC San Diego
Department of Mechanical and
Aerospace Engineering

enlace@ucsd.edu
+1 (858) 246-0146

PROGRAM DETAILS

Dates: June 23 - August 9, 2019

Application Deadline: February 8, 2019

Web Site: <http://graeve.ucsd.edu/ENLACE>

Facebook: <https://www.facebook.com/ENLACEatUCSD/>

